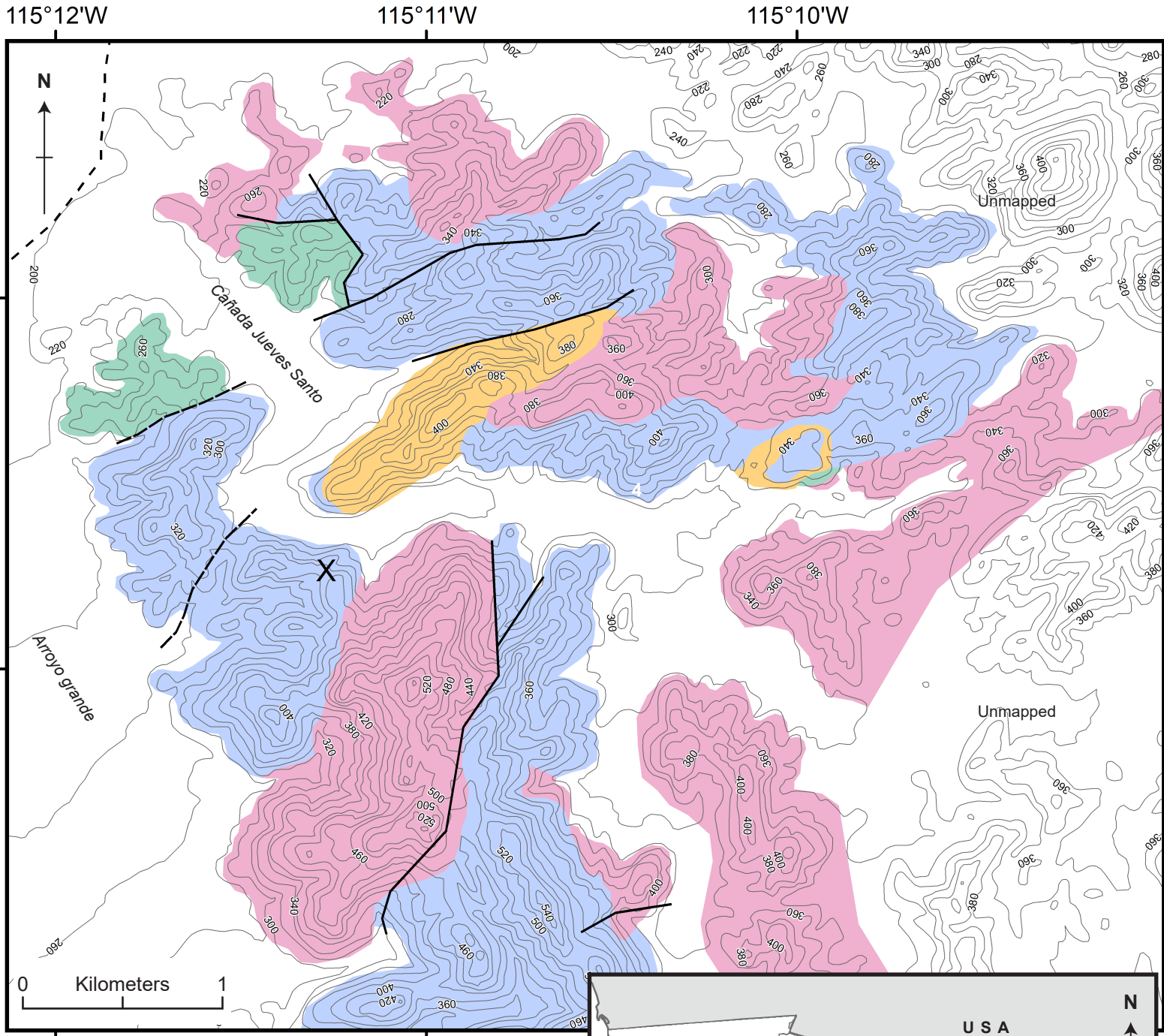


Geologic map of southern Sierra Las Pintas area (Baja California). Based on the cartography of Leier-Engelhardt (1993).



Legend

- Non-differentiated Quaternary rocks
- Volcanic rocks
- Bedded chert and argillite
- Interbedded fine sandstone, coarse siltstone and granule conglomerate debris flow
- Interbedded marble and phyllite
- Fault (dashed where buried)
- X Jueves Santo Mine
- Dirt road

Arroyo Grande Group
(Paleozoic)

